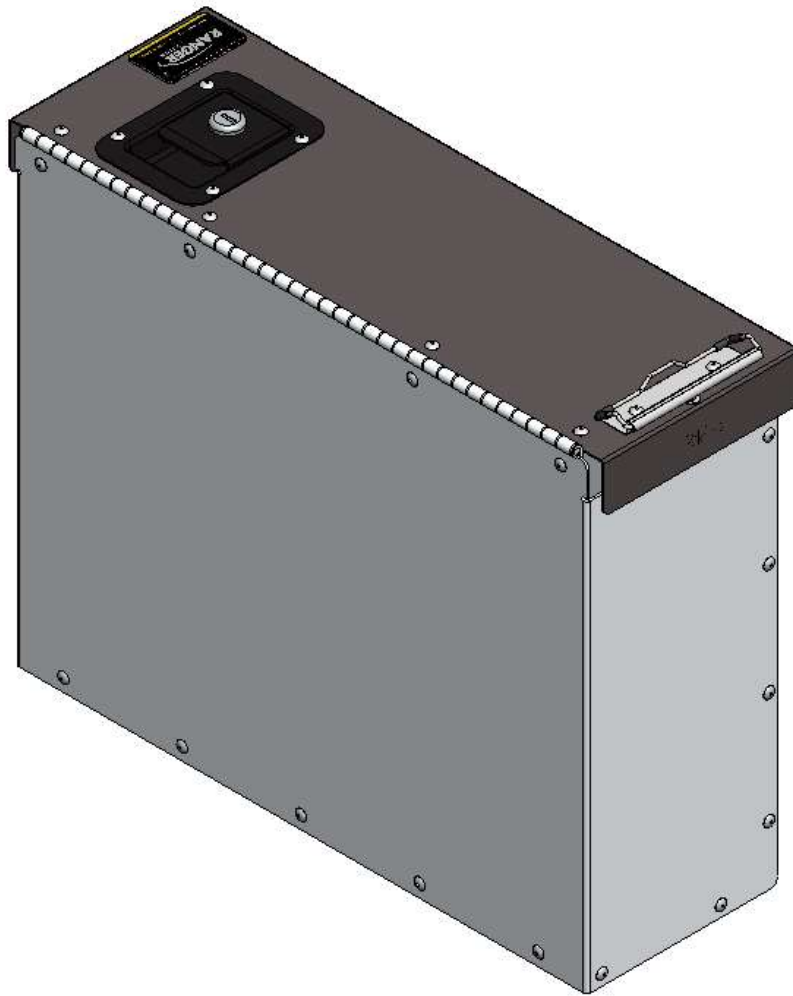


INSTALLATION GUIDE



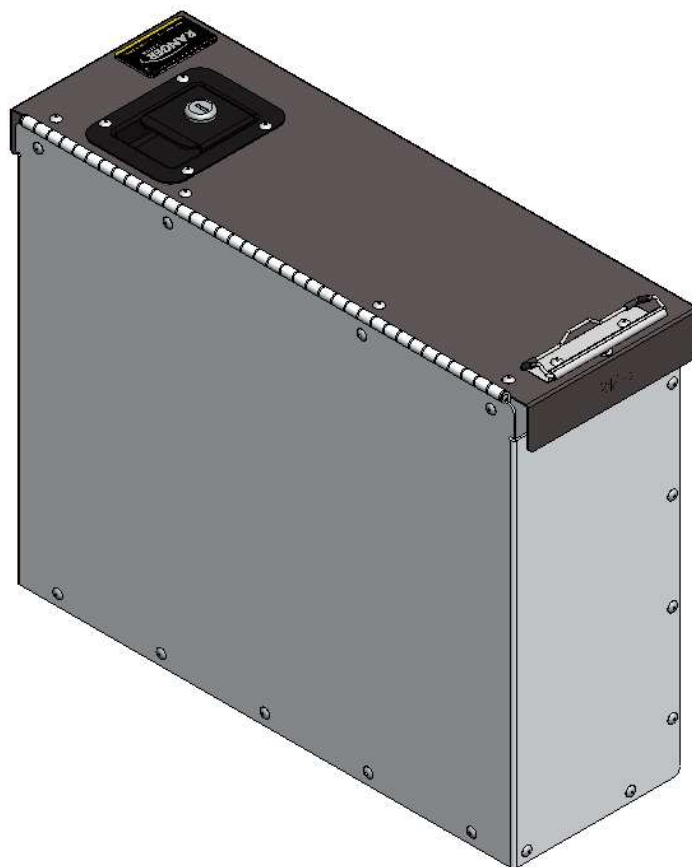
5040 CAB BOX

RANGER
DESIGN

PHASE 1 – ASSEMBLY

1.1 SETUP

1.1.1 Unpack components; compare with the bill of materials.



BILL OF MATERIAL

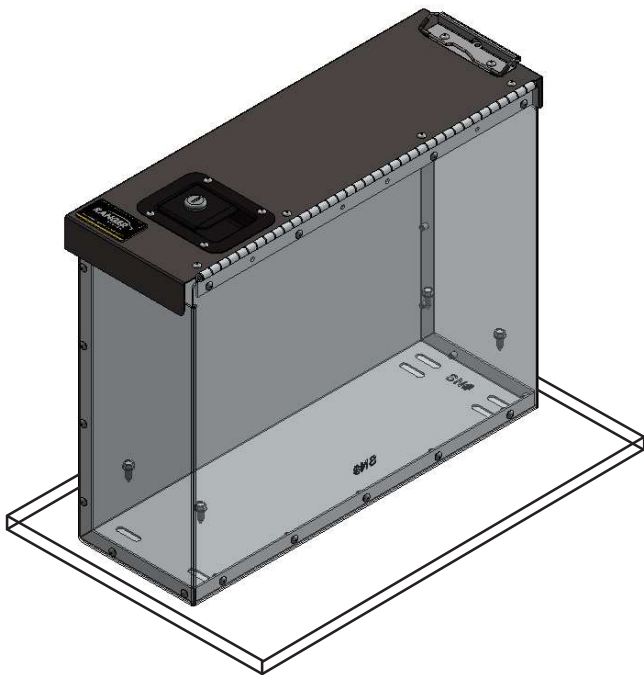
Item No.	Description	Qty.
5040	CAB BOX	1
96-5007	INSTALL FASTENER KIT	1

PHASE 2 – INSTALL

2.1 NO 5041 INSTALL

2.1.1 Place and screw your 5040 cab box on a flat surface.

NOTE: You need 5041 for Ford Transit 5040 cab box install.



TOOLS

- ☐ Cordless Impact
- ☐ 3/8" Driver Bit

HARDWARE USED

4x



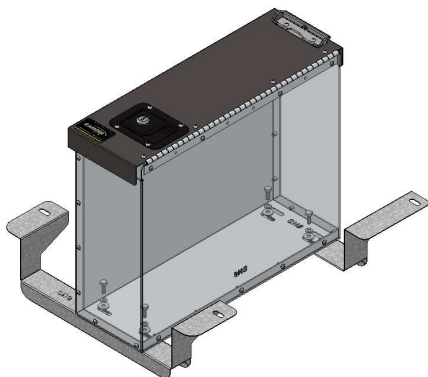
#92-102 Screw #14 x 1"

PHASE 2 – INSTALL

2.2 ON 5041 INSTALL

2.2.1 Attach the 5040 cab box on top of 5041 brackets.

NOTE: 5041 separate unit.



TOOLS

- ☐ Cordless Impact
- ☐ 1/2" Driver Bit

HARDWARE USED

4x THIS HARDWARE IS IN 5041



#90-212 Hex Bolt 5/16" x 1-1/4"



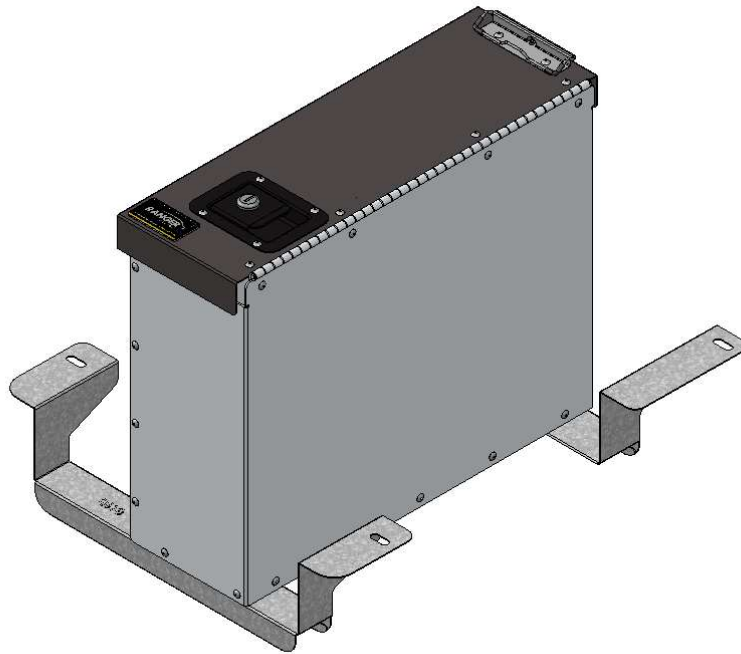
#98-122 Lock Washer



#98-116 Flat Washer



#94-132 Plusnut



**“You have successfully installed your
Cab Box
Thank you for doing business with us.”**

For any feedback or suggestions you may have, please contact: cs@rangerdesign.com

