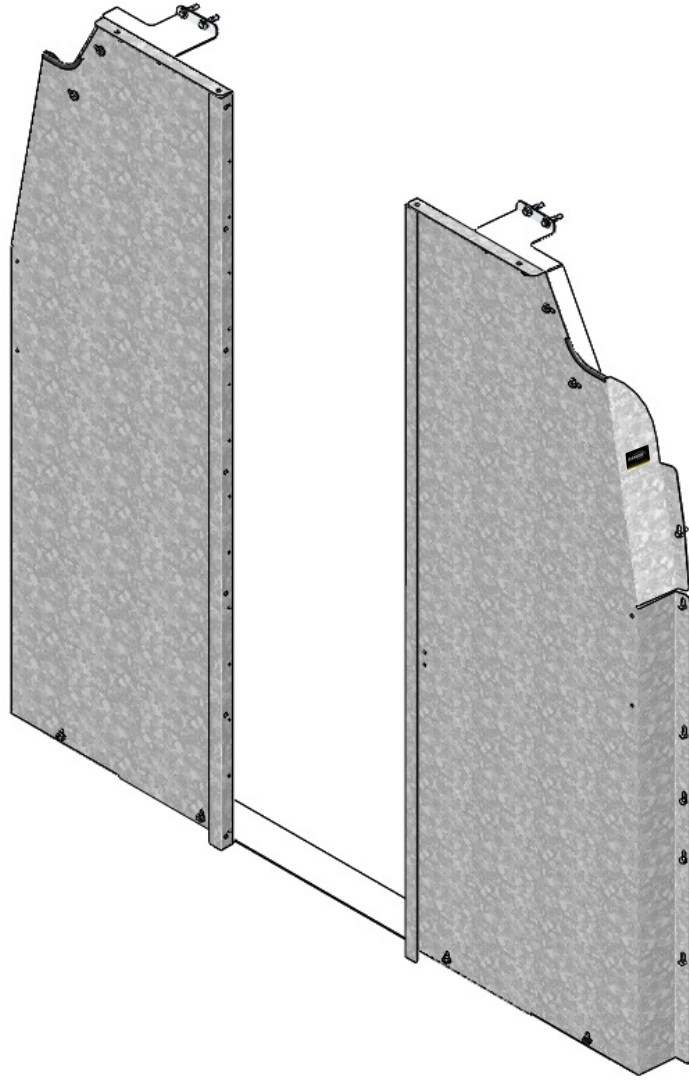


INSTALLATION GUIDE



C24-FTM STRAIGHT PARTITION

Transit Partition (Walk-Through, Steel)



QUICK START GUIDE

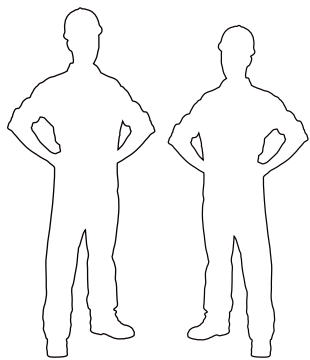
Phase 1 - Assembly

- ❑ 1.1 Setup..... 3
 - ❑ 1.1.1 Unpack components; compare with the bill of materials..... 3
 - ❑ 1.1.2 Verify all parts are present..... 3
 - ❑ 1.1.3 Identify the assembly and installation fastener bags..... 4
- ❑ 1.2 Partition assembly..... 5
 - ❑ 1.2.1 Remove all the PVC from all the parts, then attach the edge trims on these locations..... 5
 - ❑ 1.2.2 Attach the driver and passenger side ceiling brackets to the driver and passenger side panels.. 5

Phase 2 - Installation

- ❑ 2.1 Tips on how to attach a plusnut..... 6
 - ❑ 2.1.1 Attach the plusnut using the plusnut gun..... 6
 - ❑ 2.1.2 Attach the plusnut using the 6490 plusnut tool..... 6
- ❑ 2.2 Vehicle preparation..... 7
 - ❑ 2.2.1 Driver and passenger sides preparation..... 7
 - ❑ 2.2.2 Ceiling preparation..... 8
 - ❑ 2.2.3 Floor preparation..... 9
- ❑ 2.3 Straight partition installation..... 10
 - ❑ 2.3.1 Floor bracket installation..... 10
 - ❑ 2.3.2 Driver and passenger side panels installation..... 11
 - ❑ 2.3.3 Attach the driver and passenger side ceiling brackets to the van,
then attach the driver and passenger side panels to the floor bracket..... 12
 - ❑ 2.3.4 Apply the warning label on the passenger side panel..... 13

REQUIRED ITEMS



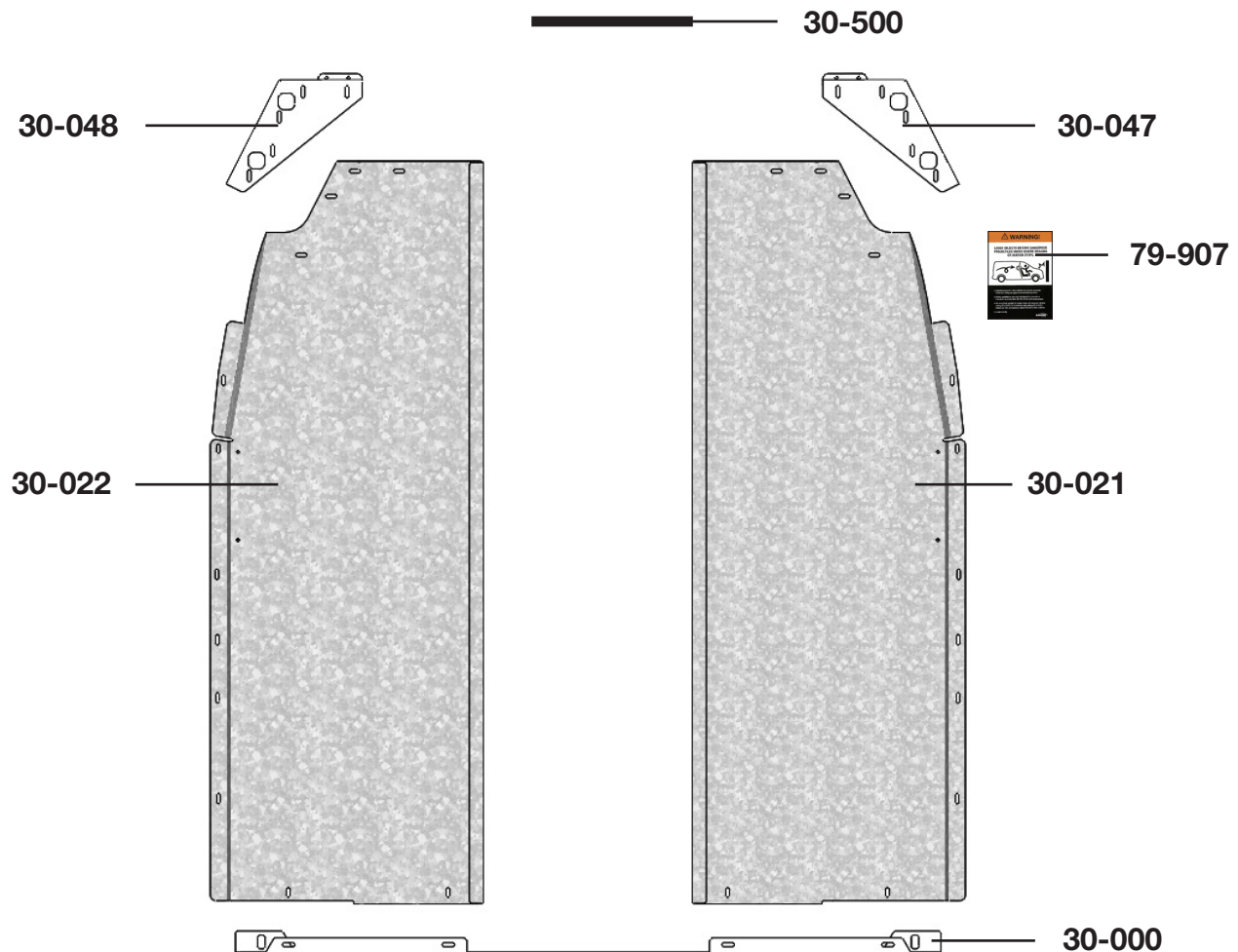
2
PERSONS

- ❑ Cordless Impact
- ❑ Cordless Drill
- ❑ Cutter
- ❑ Mallet
- ❑ Marker
- ❑ Plusnut Tool
- ❑ Socket Wrench
- ❑ Tape Measure
- ❑ 3/8" Drill Bit
- ❑ 7/16" Socket
- ❑ 1/2" Socket
- ❑ 9/16" Wrench
- ❑ 10mm Socket
- ❑ 13mm Socket

PHASE 1 – ASSEMBLY

1.1 SETUP

1.1.1 Unpack components; compare with the bill of materials.

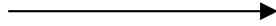


1.1.2 Verify all parts are present.

Item No.	Description	Qty.
30-000	Floor Bracket	1
30-021	Passenger Side Panel	1
30-022	Driver Side Panel	1
30-047	Passenger Side Ceiling Bracket	1
30-048	Driver Side Ceiling Bracket	1
30-500	Edge Trim (QTY in Inches)	18
79-907	Warning Label	1
94-3016	Assembly Fastener Bag	1
96-3010	Installation Fastener Bag	1

1.1.3 Identify the **Assembly** and **Installation** fastener bags.

Assembly Fastener Bag



Hardware Assembly

12x



90-482

Carriage Bolt
5/16"-18 x 1/2"

12x



94-116

Serrated Nut
5/16"-18
ZINC

12x

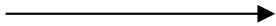


#90-482 Carriage Bolt 5/16" x 1/2"



#94-116 Serrated Nut

Installation Fastener Bag



Hardware Assembly

10x



90-118

Hex Bolt
1/4"-20 x 1-1/4"
GR-5 ZINC

6x



90-971

Hex Bolt
Serrated Bolt Type 23
M6-1.00 x 20mm BO

10x



94-130

Plusnut .250

10x



98-112

Flat Washer
1/4", 3/4" OD
ZINC

10x



98-118

Lock Washer
Regular 1/4"
ZINC

2x



98-141

Square Flat Washer
0.438" ID, x 1.000" SQUARE

10x



#90-118 Hex Bolt 1/4" x 1-1/4"



#98-118 Lock Washer



#98-112 Flat Washer



#94-130 Plusnut .250

6x



#90-971 Hex Bolt M6-1.0 x 20mm

2x

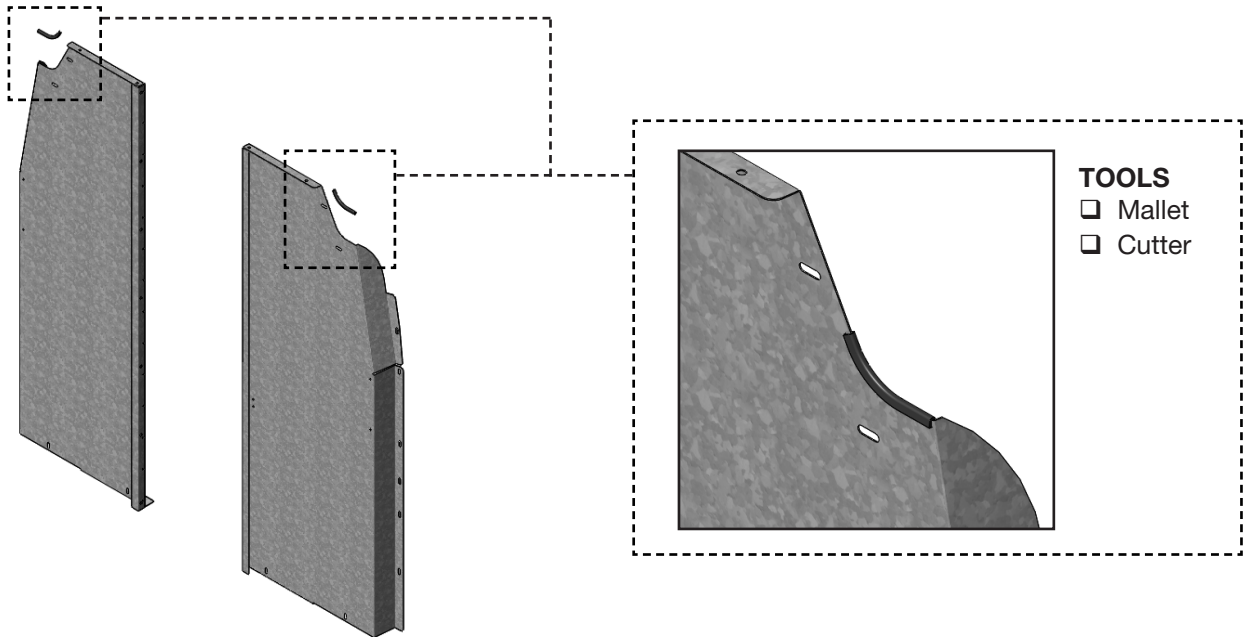


#98-141 Square Flat Washer

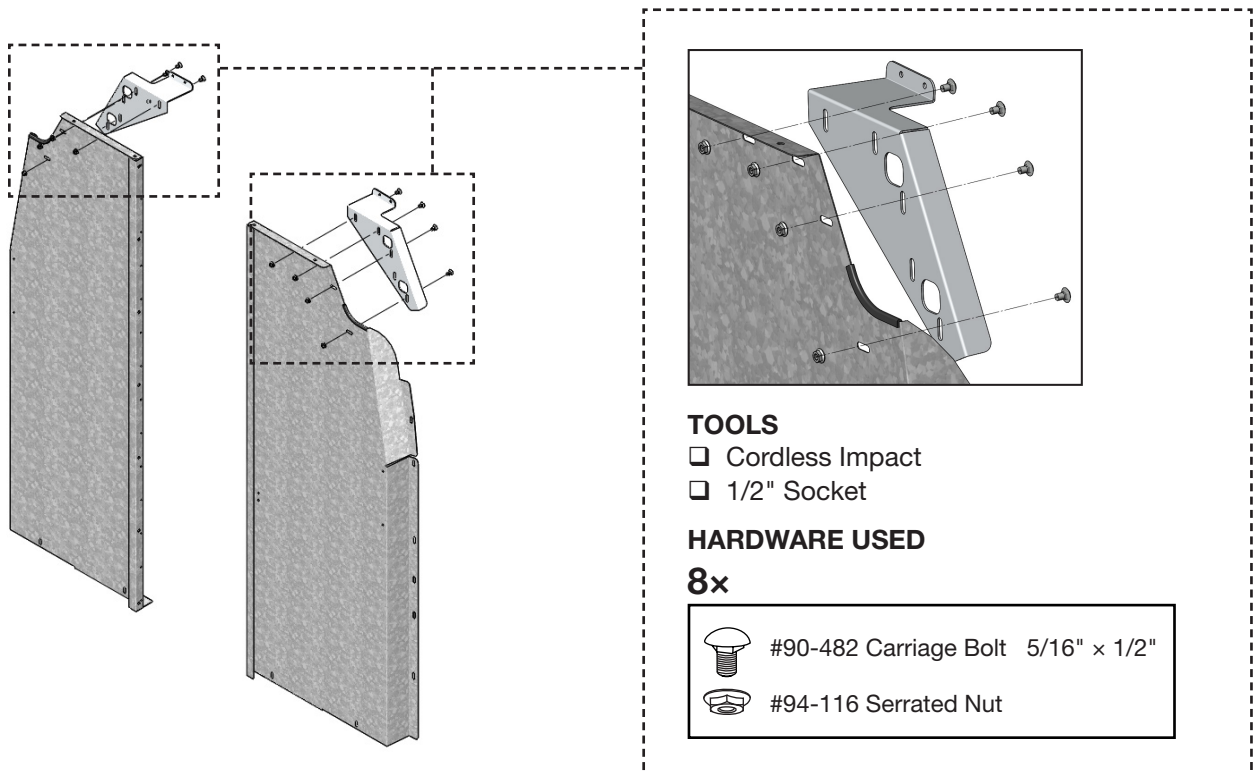
PHASE 1 – ASSEMBLY

1.2 PARTITION ASSEMBLY

1.2.1 Remove all the PVC from all the parts, then attach the edge trims on these locations.



1.2.2 Attach the driver side and passenger side ceiling brackets to the driver and passenger side panels.

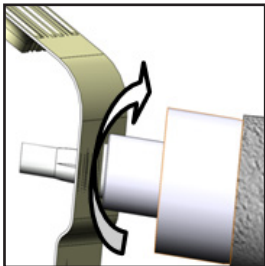


PHASE 2 – INSTALLATION

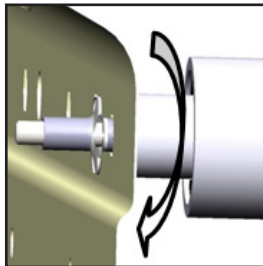
2.1 TIPS ON HOW TO ATTACH A PLUSNUT

2.1.1 Attach the plusnut using the plusnut gun.

TIPS: Put the plusnut on the plusnut gun, then attach the plusnut in the hole by turning the gun forward until the plusnut locks, then remove the gun by turning in reverse.



FORWARD

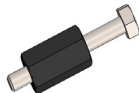


REVERSE



2.1.2 Attach the plusnut using the 6490 plusnut tool.

NOTE: The hardware used for the 6490 plusnut tool is not included in the fastener bag. The 6490 plusnut tool can be ordered separately upon demand at no charge.

6490



HARDWARE USED

-  Flat washer 1/4"
-  Flat washer 1/4" BS x 3/4" OD

TOOLS

- ☐ Cordless Impact
- ☐ 7/16" Socket
- ☐ 9/16" Wrench

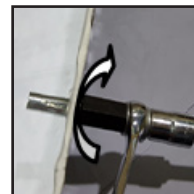
TIPS STEP 1:

Assemble the 6490 plusnut tool with the hardware needed, plusnut and the 9/16" wrench as shown.



TIPS STEP 2:

Attach the plusnut in the hole by turning the bolt forward using an impact with a 7/16" socket until the plusnut locks, then remove the bolt by turning the impact in reverse.



FORWARD

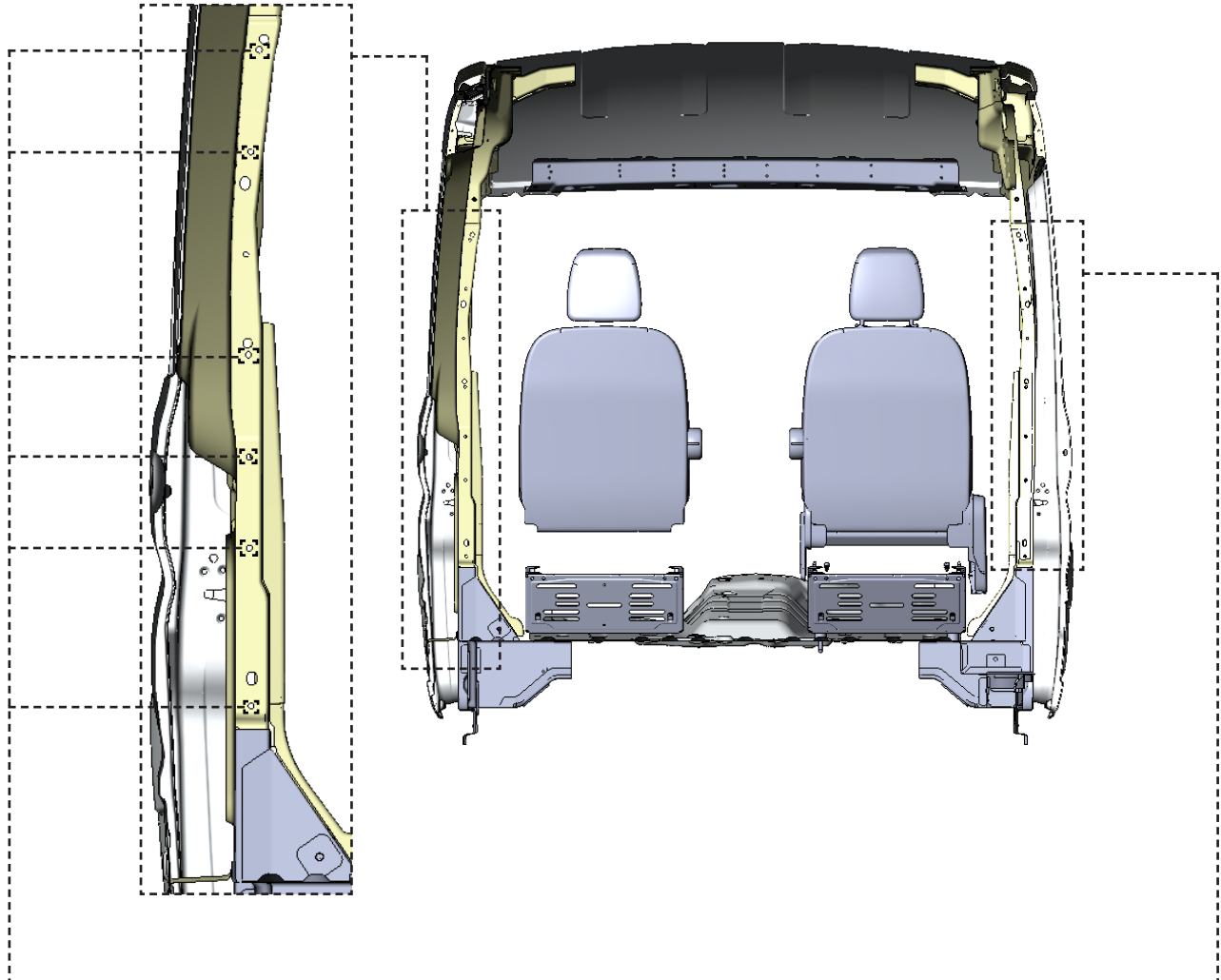


REVERSE

PHASE 2 – INSTALLATION

2.2 VEHICLE PREPARATION

2.2.1 Driver and passenger sides preparation.



Attach plusnuts on the six factory holes.



TOOLS

- Plusnut Tool

HARDWARE USED

6x



94-130
Plusnut .250

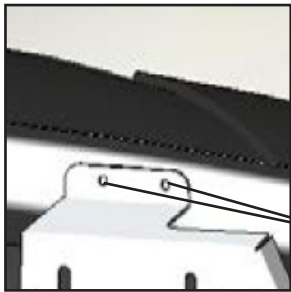
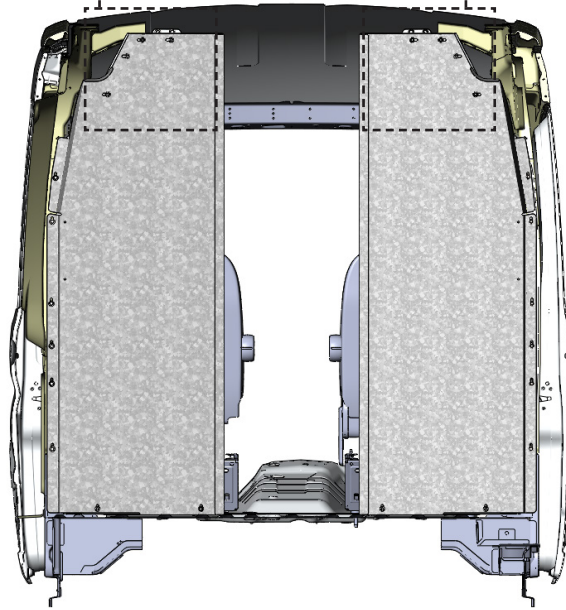
Remove the factory handle in the van.



TOOLS

- Cordless Impact
- 10mm Socket

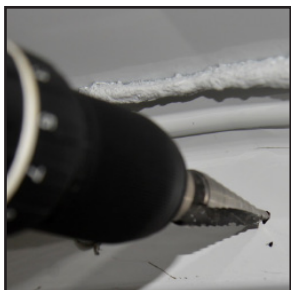
2.2.2 Ceiling preparation.



Lift the driver and passenger side panels inside the van and put it in place, then put 4 marks on the van through the holes of the driver and passenger side ceiling brackets.

TOOLS

- ☐ Marker



Put the assembled partition on the side, then drill the 4 marks using the 3/8" drill bit or step drill.

TOOLS

- ☐ Cordless Drill
- ☐ 3/8" Drill Bit or Step Drill



Attach plusnuts in the 4 holes.

TOOLS

- ☐ Plusnut Tool

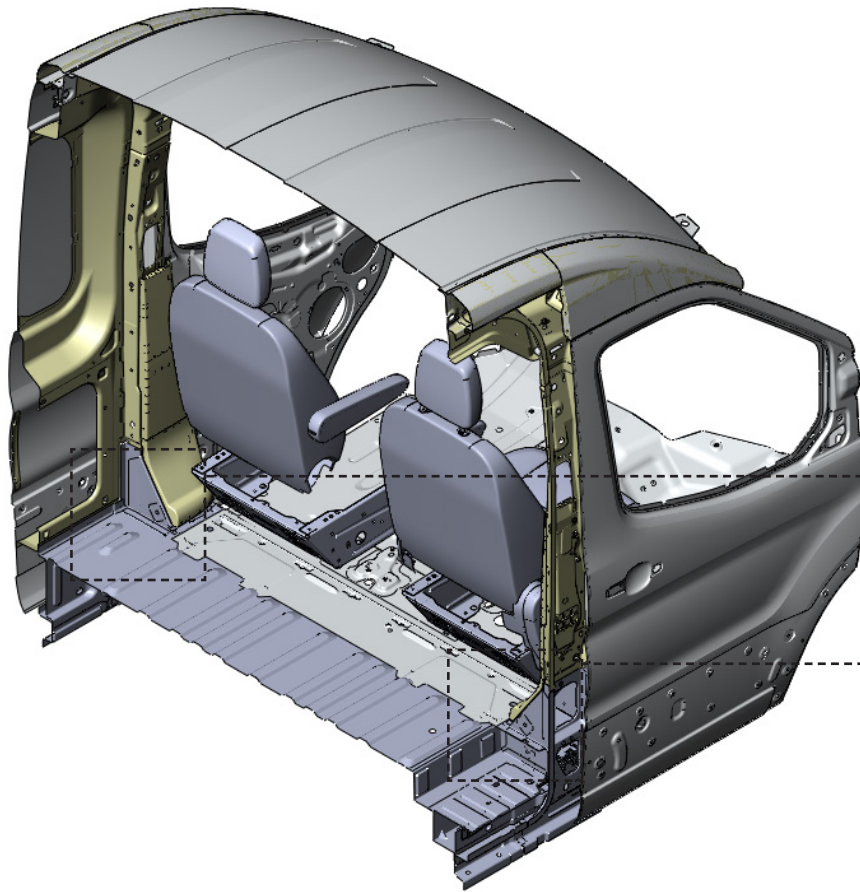
HARDWARE USED

4x



94-130
Plusnut .250

2.2.3 Floor preparation.



Remove the two D-rings in the floor, for re-use.

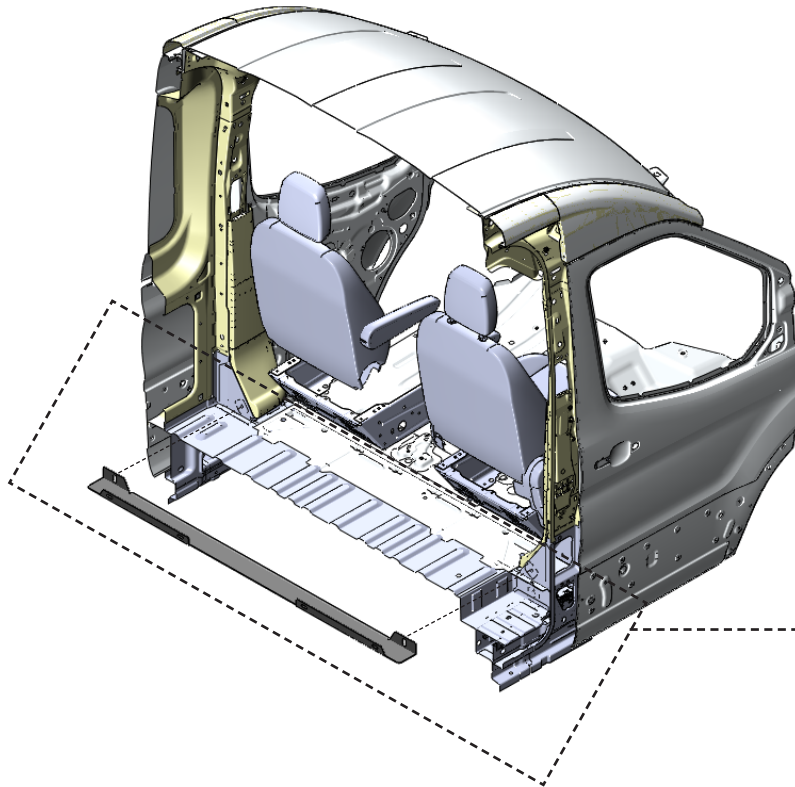
TOOLS

- ☐ Cordless Impact
- ☐ 13mm Socket

PHASE 2 – INSTALLATION

2.3 STRAIGHT PARTITION INSTALLATION

2.3.1 Floor bracket installation.



Attach the floor bracket to the floor re-using the 2 D-ring bolts with the addition of the square washers, in between the D-rings and floor bracket.

TOOLS

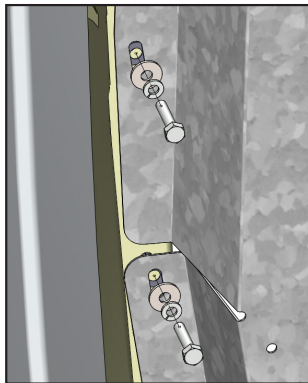
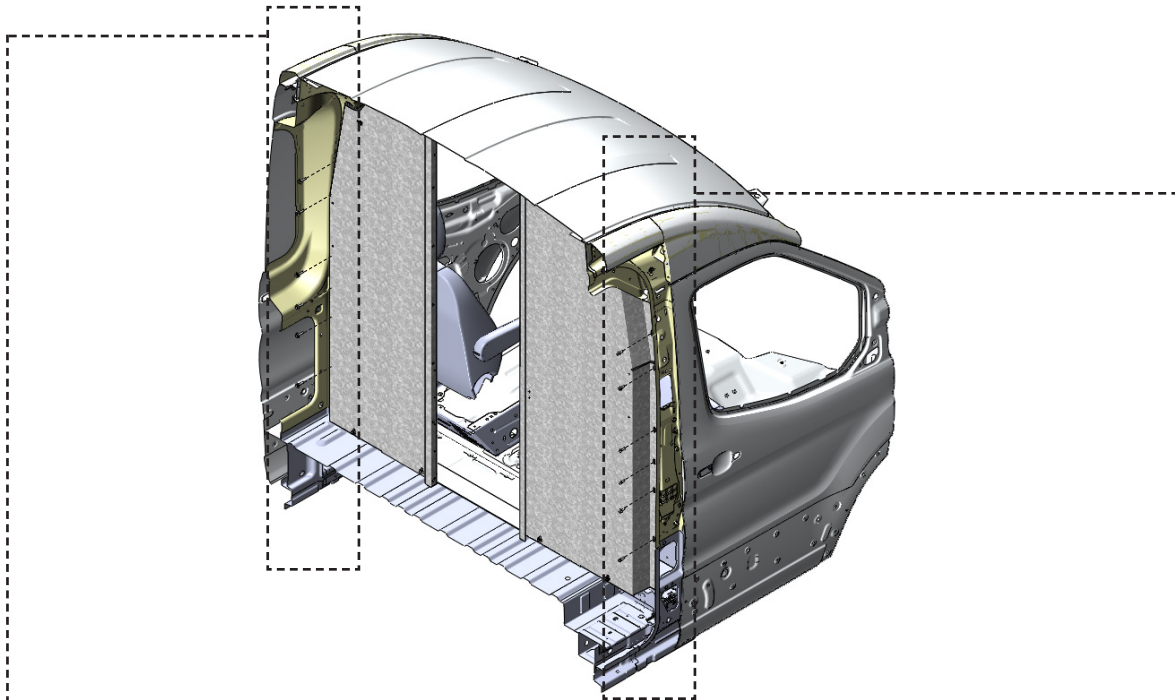
- ☐ Socket Wrench
- ☐ 13mm Socket

HARDWARE USED

2x



2.3.2 Driver and passenger side panels installation.



Attach the driver side panel to the van.

TOOLS

- ☐ Cordless Impact
- ☐ 7/16" Socket

HARDWARE USED

6x



#90-118 Hex Bolt 1/4" x 1-1/4"

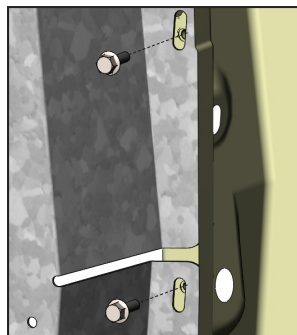


#98-118 Lock Washer



#98-112 Flat Washer

NOTE: Do not tighten the bolt too much to prevent breakage.



Attach the passenger side panel to the van.

TOOLS

- ☐ Cordless Drill
- ☐ 10mm Socket

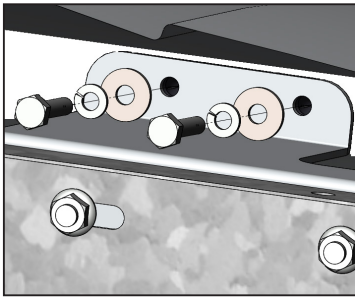
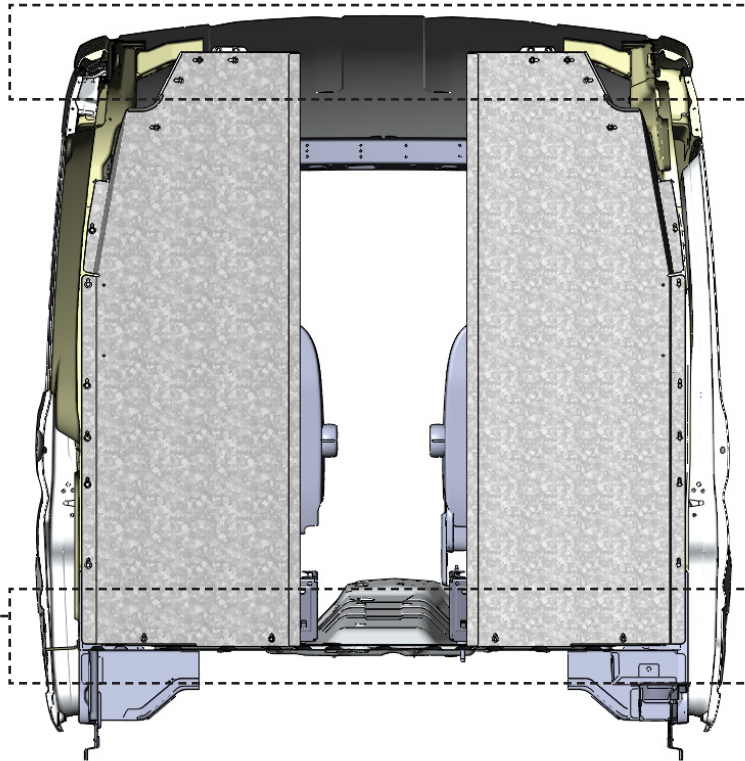
HARDWARE USED

6x



#90-971 Hex Bolt M6-1.0 x 20mm

2.3.3 Attach the driver and passenger side ceiling brackets to the van, then attach the driver and passenger side panels to the floor bracket.






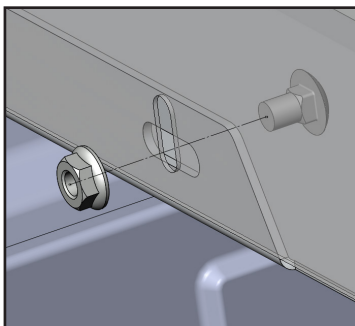
TOOLS

- ☐ Cordless Impact
- ☐ 7/16" Socket

HARDWARE USED

4x

-  #90-118 Hex Bolt 1/4" x 1-1/4"
-  #98-118 Lock Washer
-  #98-112 Flat Washer





TOOLS

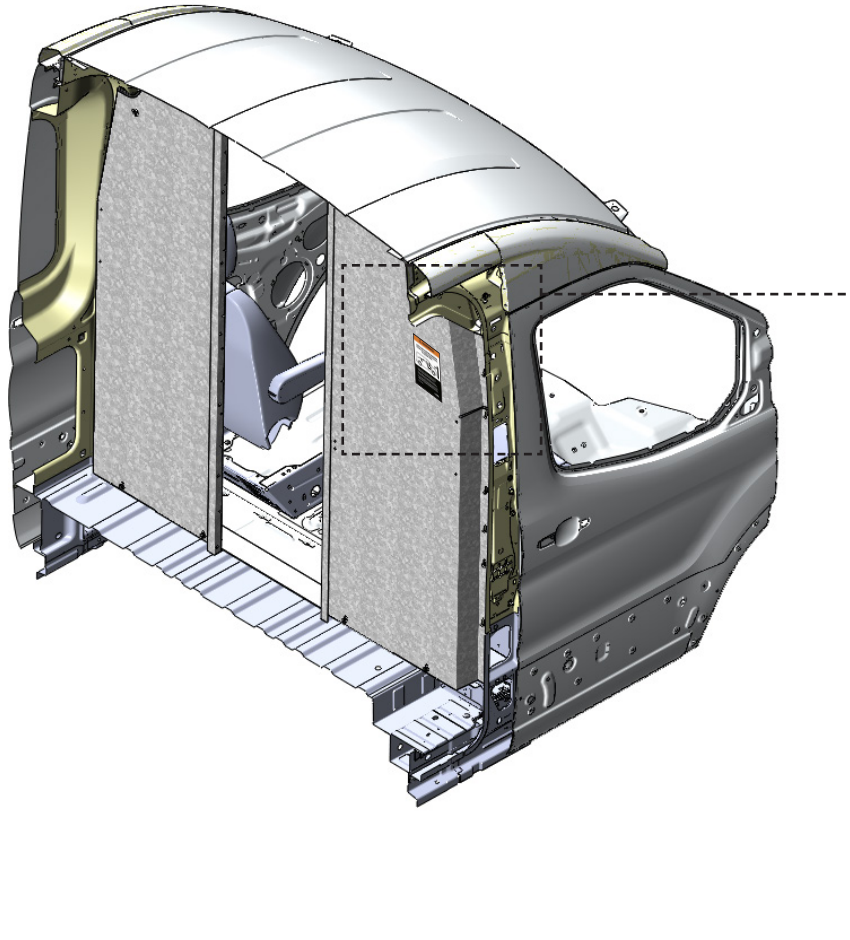
- ☐ Cordless Impact
- ☐ 1/2" Socket

HARDWARE USED

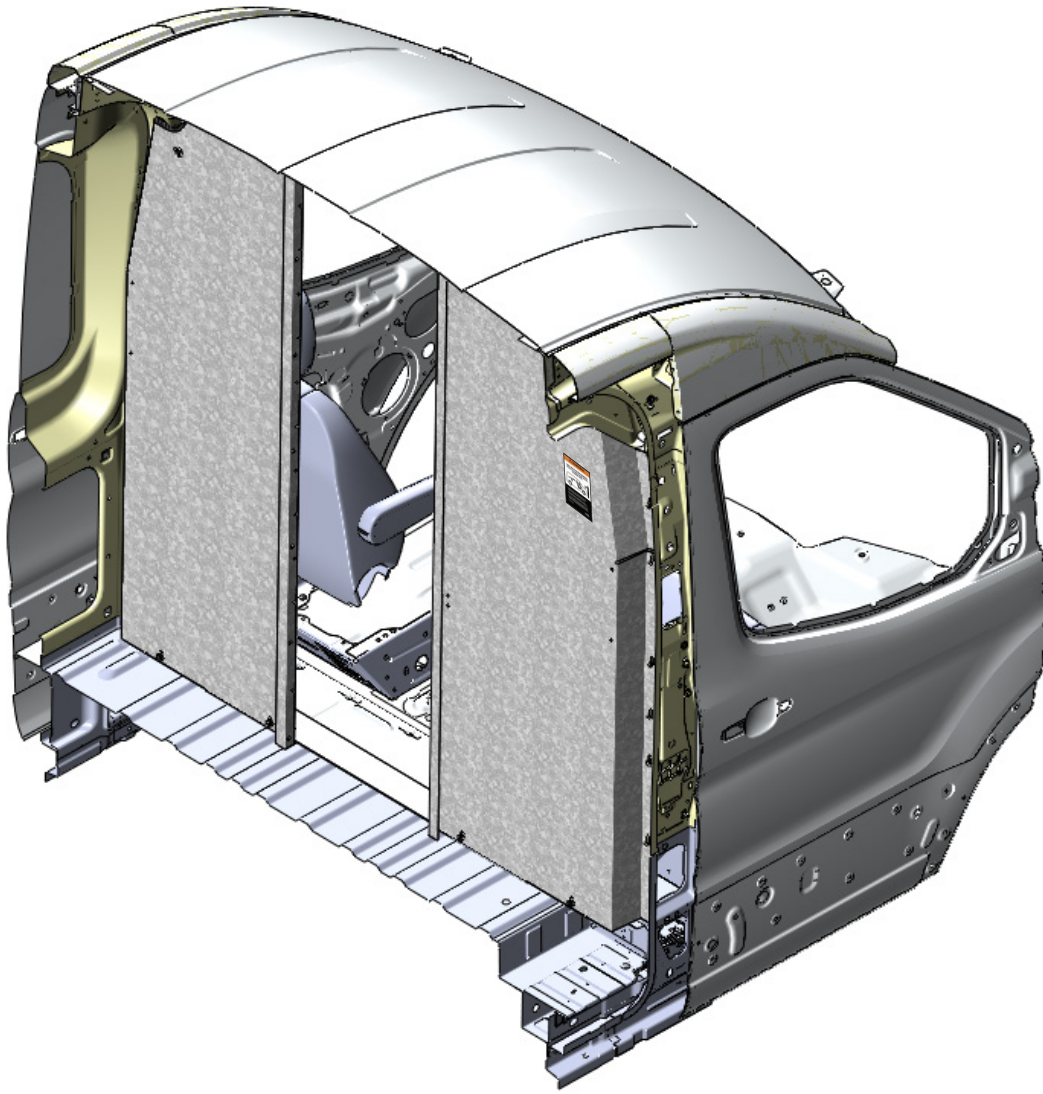
4x

-  #90-482 Carriage Bolt 5/16" x 1/2"
-  #94-116 Serrated Nut

2.3.4 Apply the warning label on the passenger side panel.



NOTE: Put the warning label in a place where it's easy to see.



**“Congratulations, you have successfully installed your
Straight Partition!”**

Thank you for doing business with us.”

