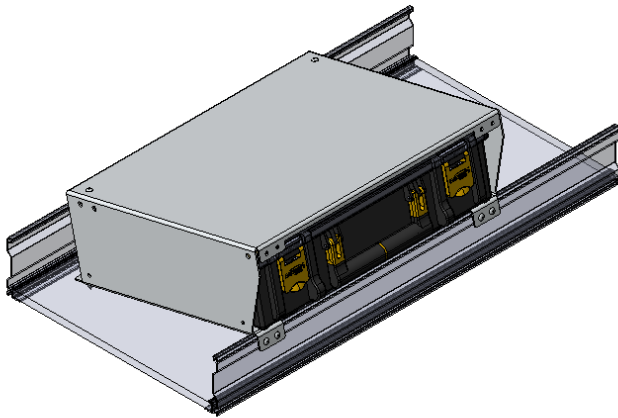
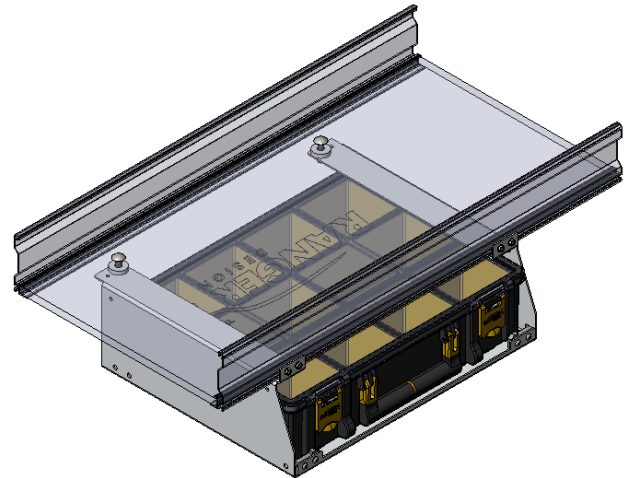


INSTALLATION GUIDE

REGULAR INSTALL



INVERTED INSTALL



62-U5070 Partskeeper Carry Case (ALUMINUM)

QUICK START GUIDE

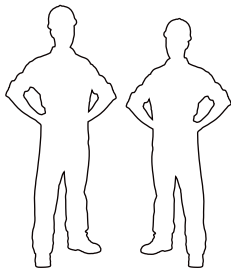
Phase 1 - Assembly

- 1.1 Setup..... 3 - 4

Phase 2 - Installation

- 2.1 Regular Install..... 5
- 2.2 Inverted Install..... 6 - 7

REQUIRED ITEMS



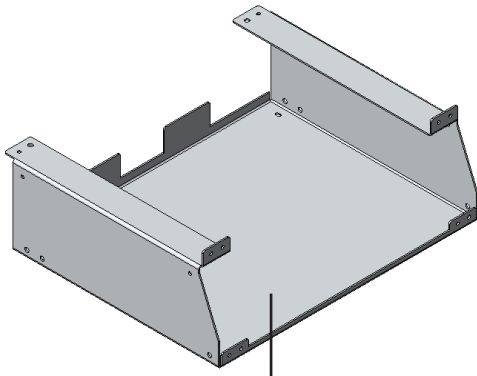
2
PERSONS

- Cordless Impact
- Cordless Drill
- Rivet Gun
- Tape Measure
- Marker
- 1/2" Socket
- 1/2" Drill Bit
- 3/16" Drill Bit
- 5/16" Driver Bit

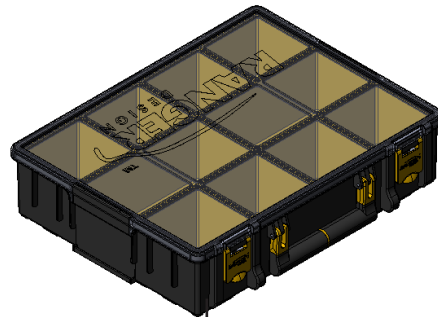
PHASE 1 – ASSEMBLY

1.1 SETUP

1.1.1 Unpack components; compare with the bill of materials.



50-700



62-U5079



50-701

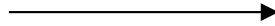
1.1.2 Verify all parts are present.

BILL OF MATERIALS

Item No.	Description	Qty.
50-700	Partskeeper Holder	1
50-701	Slide For Parskeeper	2
62-U5079	Plastic Partskeeper Case	1
94-5011	Assembly Fastener Kit	1
96-5011	Install Fastener Kit	1

1.1.3 Fastener kits.

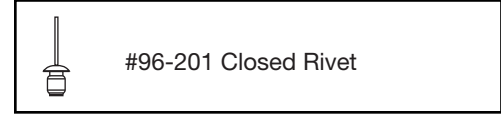
94 - 5011 Fastener Kit



Fastener Assembly

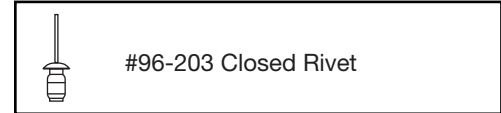
2x  **# 96-201** Closed Rivet
3/16" x 1/8"
ALUM/STEEL

2x FOR ANOTHER 50-700

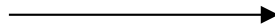


4x  **# 96-203** Closed Rivet
3/16" x 3/8"
ALUM/STEEL


4x FOR INVERTED INSTALL



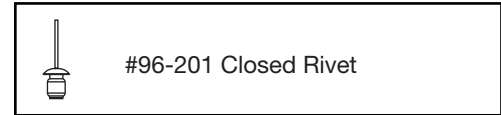
96 - 5011 Fastener Kit



Fastener Assembly

2x  **# 90-495** Carriage Bolt
5/16"-18 x 1 - 1/4"
SS304

4x FOR REGULAR INSTALL



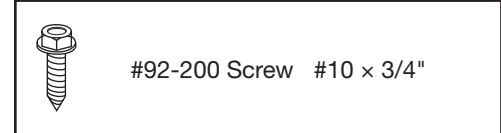
4x  **# 92-200** Screw HFH
#10 - 16 x 3/4"
ZINC

2x FOR REGULAR INSTALL



2x  **# 92-174** Screw
#10 x 3/4"
ZINC

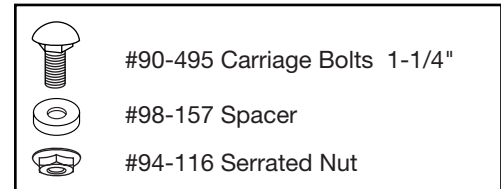
4x FOR INVERTED INSTALL



2x  **# 94-116** Serrated Nut
5/16"-18
ZINC

4x  **# 96-201** Closed Rivet
3/16" x 1/8"
ALUM/STEEL

2x FOR INVERTED INSTALL

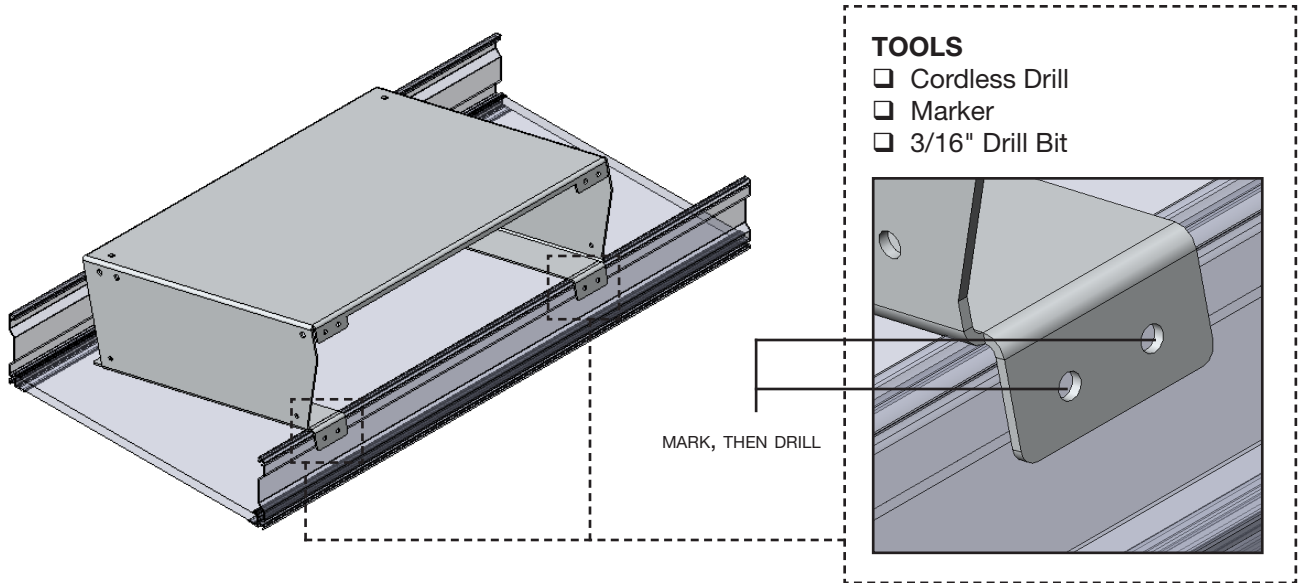


2x  **# 98-157** Spacer
0.375" ID, x 1.0" OD x 0.25" LONG
NYLON

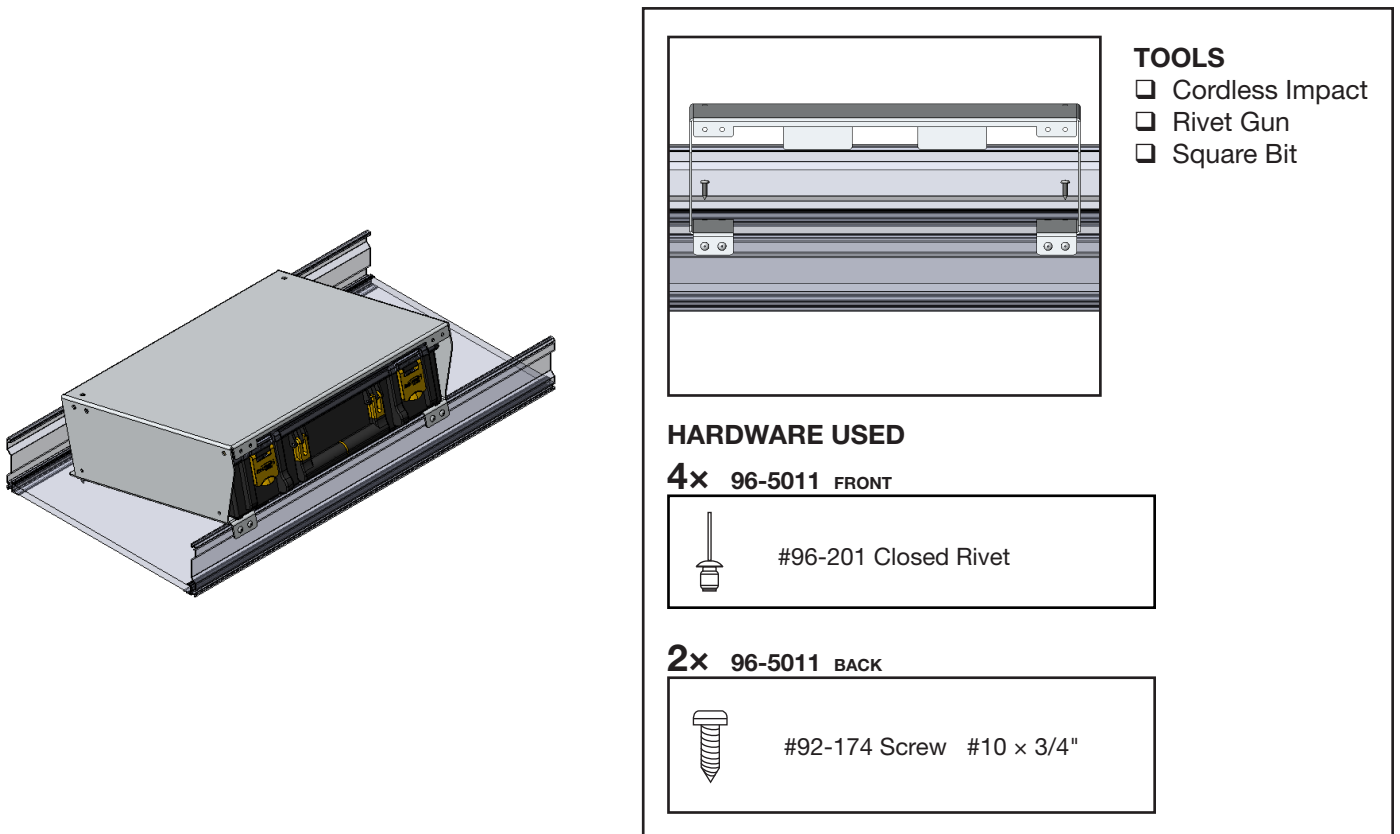
PHASE 2 – INSTALL

2.1 REGULAR INSTALL

- 2.1.1**
- Place the partskeeper holder on top of 14" deep shelf or deeper.
 - Mark the holes from the partskeeper holder to the shelf extrusion, then drill the mark using 3/8" drill bit.



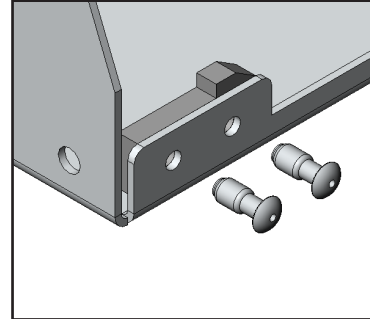
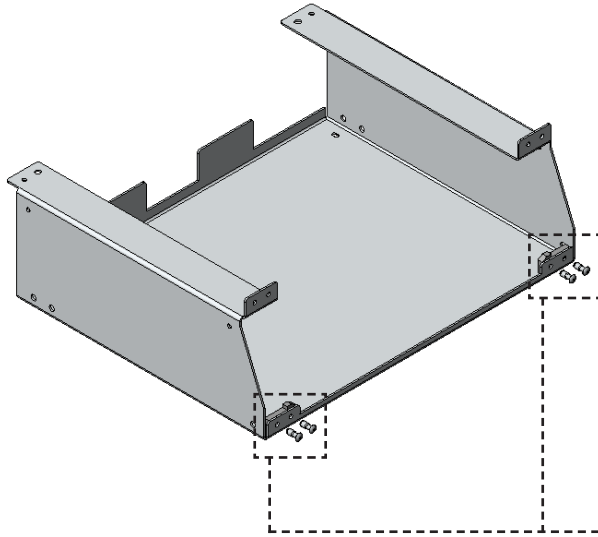
- 2.1.2**
- Install the partskeeper holder to the shelf tray by riveting and screwing the partskeeper holder.
 - After installing the partskeeper holder slide the partskeeper case inside the partskeeper holder.



PHASE 2 – INSTALL

2.2 INVERTED INSTALL

2.2.1 Attach the partskeeper slider to the partskeeper holder.



TOOLS

- Rivet Gun

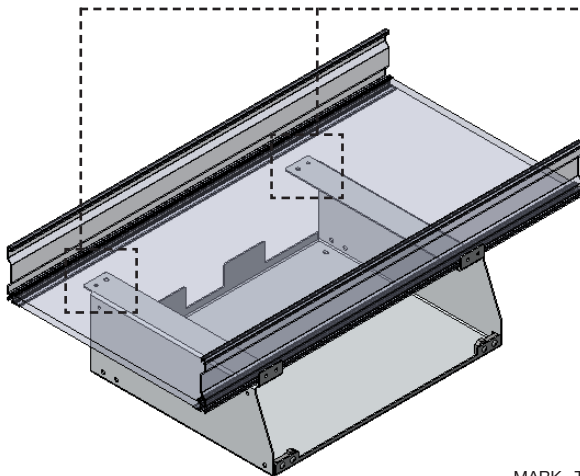
HARDWARE USED

4x 94-5011



#96-203 Closed Rivet

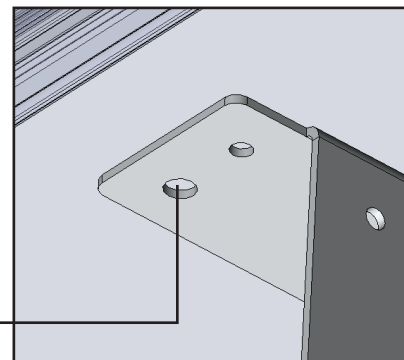
- 2.2.2
- Place the partskeeper holder under the 14" deep shelf or deeper.
 - Mark the holes from the partskeeper holder to the shelf tray plywood, then drill the mark using 1/2" drill bit.



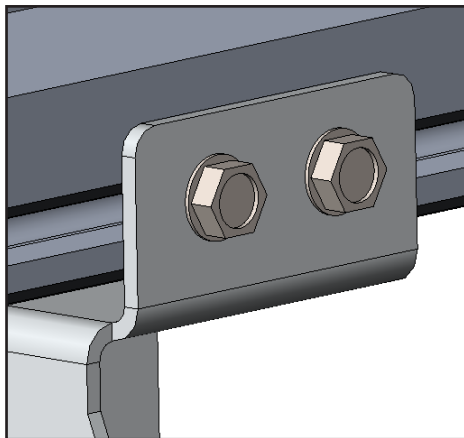
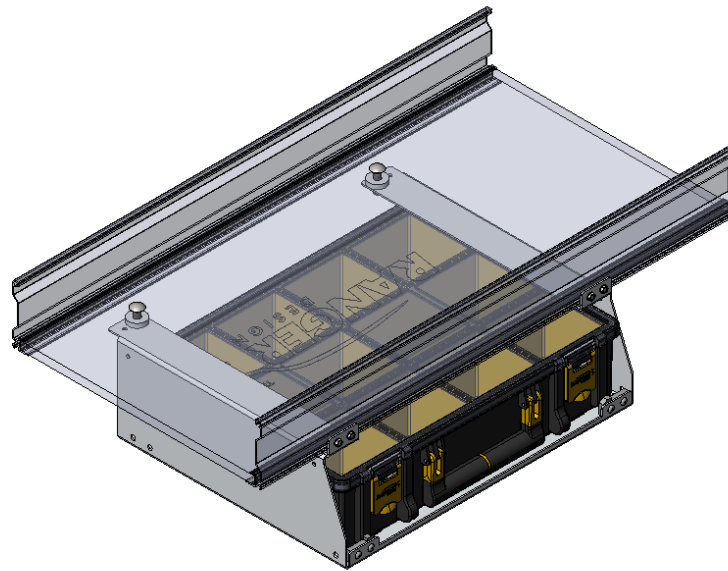
MARK, THEN DRILL

TOOLS

- Cordless Drill
- Marker
- 1/2" Drill Bit



- 2.2.3** • Install the partskeeper holder to the shelf tray by bolting and screwing partskeeper holder to the shelf tray.
 • After installing the partskeeper holder slide the partskeeper case inside the partskeeper holder.



TOOLS

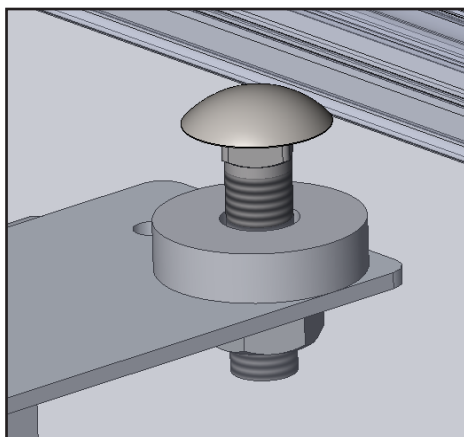
- Cordless Impact
- 5/16" Bit

HARDWARE USED

4x 96-5011 FRONT



#92-200 Screw #10 x 3/4"



TOOLS

- Cordless Impact
- 1/2" Socket

HARDWARE USED

2x 96-5011 BACK



#90-495 Carriage Bolts 1-1/4"

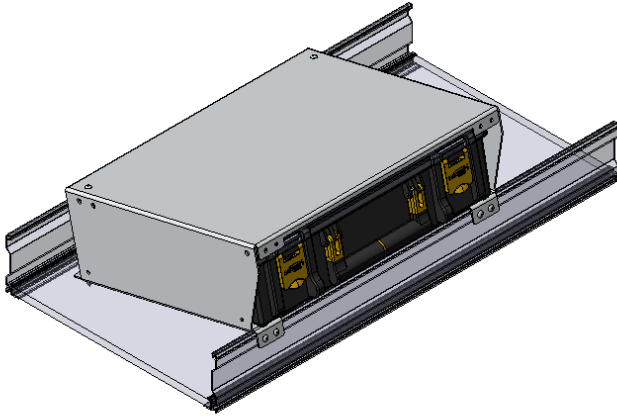


#98-157 Spacer

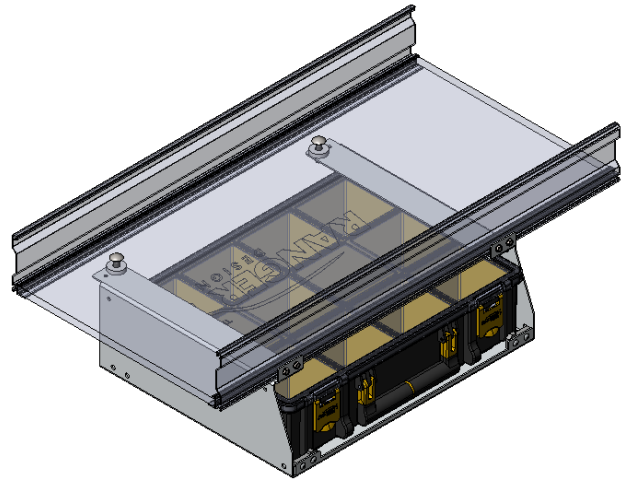


#94-116 Serrated Nut

REGULAR INSTALL



INVERTED INSTALL



**“You have successfully installed your
62-U5070**

Thank you for doing business with us.”

For any feedback or suggestions you may have, please contact: cs@rangerdesign.com

